

Proflow SC

POWERED AIR RESPIRATOR



tyco / **SCOTT**
HEALTH & SAFETY

More Flexibility - Added Safety - Extra Applications

PROFLOW SC

Comprehensive powered-air respiratory protective system from Scott Health & Safety

Proflow SC represents the next generation of powered air respirators. Intelligent and easy to use SC has a number of advanced refinements over the original Proflow concept.

Lightweight and compact Proflow SC's ergonomic design incorporates a curved backplate, which ensures user comfort for long periods.

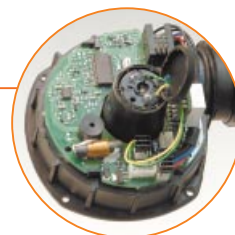
The addition of 6 new headtops expands the range of applications – in particular the advanced - Procap and Procap Welding - offering unrivalled user interface.

The unique 3 year blower warranty confirms the reliability and robust design of Proflow SC.



Intelligent

- Electronic control of the air supply maintains a comfortable airflow, automatically compensating for changes in filter resistance.
- On board data logging records usage to provide reliable and downloadable maintenance information.
- Unique 3 year/1800 hour blower warranty, whichever comes first (battery warranty 1 year).



Performance monitor

- Comprehensive alarm system ensures operational safety.
- Continuous visible monitor of battery status and filter blockage with audible warning of need to recharge/replace.
- Typical 7-15 hours use from a single charge (depending on filter/facepiece combination).



Multi-function, multi-purpose

- Extensive headtop options to cover a wide range of applications.
- Comprehensive choice of filters.





Minimal maintenance

- No user calibration or servicing required.
- The electronics allow your Scott approved service centre to run diagnostic checks and provide full service history records.



Low through-life costs

- Durable construction and heavy-duty materials ensure a long working life.
- Shower-proof casing for easy decontamination.



Always on stand-by

- Integrated battery is safely enclosed within the casing and charged in-situ.
- Lightweight NiMH battery with fast recharge.
- Smartcharger indicates charging status and reverts to trickle charge, allowing fully charged battery to remain plugged-in on standby.
- Shielded on/off button eliminates accidental shut-off.



PROFLOW SC TECHNICAL DATA

Air flow:	Min 120 l/min, automatic adjustment. The blower automatically compensates for flow resistance caused by filter blockage or higher resistance filters.
Battery:	NiMH rechargeable 9.6V/3.8Ah. Optional NiMH 9.6V/4.5Ah
Battery operating time:	7-15 h from a single charge, depending on the filter/facepiece combination.
Charging device:	6 h recharging time. Automatic trickle charge.
Power pack status indication:	Visual display of battery status (A), filter blockage (P). Warning buzzer of low battery status; running time ca 15 minutes left.
Weight of unit without filters:	1,4 kg
Sound level:	< 70 dB
Temperature range:	-10 °C ... + 50 °C
Humidity:	< 95 %
Recharging temperature:	Recharging at ≥ 20 °C recommended.



PROCAP

This new powered air helmet combines respiratory, head, face, eye and optional hearing protection, plus the option to retrofit a purpose built independent welding visor. Procap features a sturdy heat-resistant polyamide shell, adjustable head harness, comfortable face seal and parallel-rail guided visor frame. Choice of visors for protection against impact, glare, heat and infrared radiation available. The breathing hose is swivel-jointed to provide freedom of movement. CE Certified to EN 12941, TH2. EN397 (excluding clause 4.4). EN166/169. EN175. EN352-3.

FLOWHOOD 5

Flowhood 5 combines head, face and respiratory protection. The lightweight, well-balanced ABS helmet has airflow distribution to minimise wind in the eyes discomfort. Designed for use with helmet mounted hearing protection. Choice of polycarbonate or acetate visors with PU-coated nylon face seal. EN 12941, TH2. EN397. EN166 1B9.

FLOWHOOD 3

Flowhood 3 combines respiratory and impact protection. The flip up visor is available in polycarbonate or acetate. Lightweight and comfortable with a broad face seal and replaceable visors. CE Certified to EN12941, TH2. EN166.

AUTOMASK

Lightweight, comfortable, multi-purpose face shield. The frame is polyethylene and the replaceable acetate visor is anti-mist coated. Replaceable and washable polyether-foam face seal. CE Certified to EN 12941, TH2.

PROVIZOR

This lightweight face shield has a silicone face seal and harness, a moulded frame and replaceable anti-mist acetate visor. Choice of hoses include one with an angled connector which swivels as the wearer moves. Spark-shielded exhalation channel. Impact resistant visor to class 3-B. CE Certified to EN 12941, TH2.

TH2 HOODS AND HELMETS



Pro2000 filters:

- PSL
- A-PSL
- B-PSL
- AB-PSL
- ABE-PSL
- ABEK-PSL



TH3

HEADTOPS

TH3 Helmets and hoods



FLOWHOOD 1

An ultra-lightweight half hood for applications where impact protection is not required. Manufactured from durable PU-coated nylon with a flexible acetate visor. Available in two sizes to ensure a good fit for all wearers. CE Certified to EN 12941, TH 2.



FLOWHOOD 25

Combining respiratory, head, face and chemical splash protection, Flowhood 25 has all the benefits of Flowhood 5, with its lightweight, well-balanced ABS helmet, and replaces the faceseal with a full head/shoulder cape in Hypalon for the most demanding environments. Seams are taped to resist ingress of contaminants. CE Certified to EN12941, TH3. EN397. EN166.



FLOWHOOD 2

A lightweight full hood offering the highest levels of protection. Made from durable PU-coated nylon. Flowhood 2 is designed for applications where impact protection is not needed. As 'one size fits all' it readily overcomes fit issues like beards or spectacles. An optional anti-static version is also available in white. CE Certified to EN12941, TH3.



AUTOMASK LITEHOOD

The addition of a PVC hood to the lightweight, comfortable, multi-purpose Automask face shield offers full head and neck cover as well as impact protection, and further increases the level of respiratory protection. CE Certified to EN 12941. TH3.

TH3

TH3 HOODS AND HELMETS

NEW!



Flowhood 25



Flowhood 2



Automask-Litehood



Pro2000 filters:

- PSL
- A-PSL
- B-PSL
- AB-PSL
- ABE-PSL
- ABEK-PSL



TH2
TH1

HEADTOPS

Welding helmets and shields, TH2 & TH1



PROCAP WELDING

All the benefits of Procap plus a (removable) lightweight welding shield with a flip-front 110 x 90 mm lens aperture which accepts electro-optical and passive lenses. The unique patented dual visor-glide mechanism allows the user to smoothly retract just the welding shield or both visors CE Certified to EN 12941, TH2, EN 175, EN397 (excluding clause 4.4).

WS-AF

welding shield
WS-AF-TC welding shield with helmet
The WS-AF welding

shield is lightweight and comfortable. The patented construction comprises a shaded and UV filtering main visor and a unique flip-up arc-welding visor, available in different shades. CE Certified to EN 12941, TH1.

ALBATROSS 300 welding shield ALBATROSS 430 welding shield with helmet

Albatross incorporates a flip-front 60 x 110 mm visor which accepts passive and electro-optical lenses. CE Certified to EN 12941, TH1.

TM3
TM2

HEADTOPS

Facemasks, TM3 & TM2



PROMASK full face mask

Promask offers particularly comfortable high level protection. It is made from a special elastomer that offers high chemical, humidity and gas permeability resistance, as well as being skin-friendly. The clear silicone inner mask is non-allergenic. An easy-to-attach welding shield is also available. CE Certified to EN 12942, TM3.

SARI full face mask

Available in soft natural rubber or hypo-allergenic silicone, Sari offers a wide-view visor and excellent anatomic fit. An easy to attach welding shield is also available. CE Certified to EN 12942, TM3.

HALF MASKS

Lightweight half mask available in silicone or natural rubber. CE Certified to EN 12942, TM2.

TH2
TH1

WELDING SHIELDS TH2&TH1

Albatross 430

WS-AF-TC



Albatross 300

WS-AF

Pro2000 filters:

PSL
A-PSL
B-PSL
AB-PSL
ABE-PSL
ABEK-PSL



TM3
TM2

FACEMASKS, TM3 & TM2



Promask

Sari

Half mask

Pro2000 filters:

PSL
A-PSL
B-PSL
AB-PSL
ABE-PSL
ABEK-PSL



PROFLOW SC APPLICATIONS

Application	Facepieces	Full face mask	Half mask	Automask, Provizor	Flow-hood 1	Flow-hood 2	Flow-hood 3	Flow-hood 5	Automask-Litehood	Procap & Flowhood 25	Procap Welding
Aluminium works											
Asbestos removal											
Nuclear industry											
Pharmaceutical											
Steel industry											
Lead processing											
Paint spraying											
Chemical plants											
General maintenance											
Laboratories											
Welding											
Shipyards											
Foundries											
Agriculture											
Flour mills and silos											
Food processing											
Pest control											
Animal husbandry											
Grinding											
Blasting operations											
Isocyanates											
Petrochemical											
Textiles											
GRP (glass-reinforced-plastic) Manufacture											
Mining											
Demolition & maintenance											
Building & construction											
Purification & Sewage											
Paper & Pulp industries											
Electronics/ PCB manufacture											

Classifications

Headtops	Full face masks	Half masks	Procap and Procap Welding, Automask, Provizor, Flowhood 1, 3, 5	Flowhood 2, Flowhood 25, Automask-Litehood	Welding shields: WS-AF, WS-AF-TC, Albatross 300, Albatross 430
PF 10 P	TM3 PSL	TM2 PSL	TH2 PSL	TH3 PSL	TH1 PSL
CF22A-P	TM3A2PSL	TM2A2PSL	TH2A2PSL	TH3A2PSL	TH1A2PSL
CF22B-P	TM3B2PSL	TM2B2PSL	TH2B2PSL	TH3B2PSL	TH1B2PSL
CF22AB-P	TM3A1B2E1PSL	TM2A1B2E1PSL	TH2A1B2E1PSL	TH3A1B2E1PSL	TH1A1B2E1PSL
CF22ABE-P	TM3A1B2E1PSL	TM2A1B2E1PSL	TH2A1B2E1PSL	TH3A1B2E1PSL	TH1A1B2E1PSL
CF32ABEK-P	TM3A1B2E2K2PSL	TM2A1B2E2K2PSL	TH2A1B2E2K2PSL	TH3A1B2E2K2PSL	TH1A1B2E2K2PSL

PROTECTION FACTORS (National directions must be followed)

Powered respirators with particle and combined filter combination	Assigned protection factors ¹⁾	Nominal protection factor ²⁾
Powered respirator TH1	10	10
Powered respirator TH2	20	50
Powered respirator TH3	40	500
Power-assisted respirator TM1	10	20
Power-assisted respirator TM2	20	200
Power-assisted respirator TM3	40	2000







1) BS 4275 APF = assigned protection factor

2) Guidelines for selection and use of respiratory protective devices, CR 529:1993 CEN 1993.

Scott Health & Safety Oy recommends that the most conservative value of protection factor should be used. This is in accordance with international best practice.



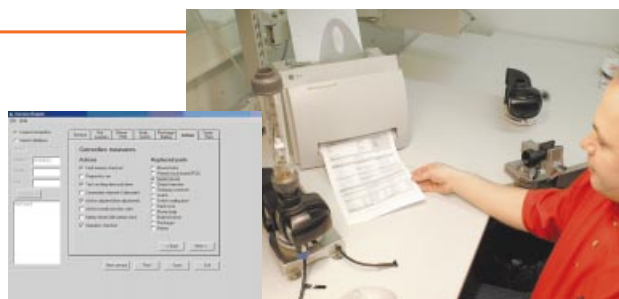
PRO2000 FILTERS APPROVED FOR PROFLOW SC

	Colour code	Particle filter	Ref. nr
		PF10 P3 Solid and liquid toxic, radioactive and detrimental particles as well as micro-organisms, e.g. bacteria and viruses.	052670
	Colour code	Combined filters	
		CF 22 A2 P3 Gases and vapours from organic compounds and solid and liquid toxic particles.	042670
		CF 22 B2 P3 Inorganic gases and vapours and solid and liquid toxic particles.	042671
		CF 22 A2B2 P3 Organic, inorganic gases and vapours and solid and liquid toxic particles.	042674
		CF 22 A2B2E1 P3 Organic, inorganic and acid gases and vapours and solid and liquid toxic particles.	042678
		CF 32 A2B2E2K2 P3 Organic, inorganic and acid gases and vapours, ammonia and solid and liquid toxic particles.	042799

PRACTICAL SERVICE

Proflow SC incorporates a data-logging function, which automatically records downloadable information about usage and performance of the blower unit:

- Provides historical maintenance log
- Maintains serial and owner ID on board
- Maintains loading data
- Tracks filtration resistance to assist in scheduling filter changes
- Downloads data at service, offers a full report to the customer
- Provides error information via fault memory
- Includes diagnostic program technology – Auto Analysis
- Maintains warranty status



Scott recommends a yearly service calibration check carried out by authorized personnel.

ORDERING INFORMATION

064024 Proflow SC blower, including battery, Euro charger, hose and belt

064044 Proflow SC blower, including battery, UK charger, hose and belt

HEADTOPS

064401	Procap, clear visor (Procap with shaded visors also available)
064421	Procap Welding
064286	Flowhood 5
064281	Flowhood 1 S/M
064282	Flowhood 1 M/L
064282	Flowhood 2
064283	Flowhood AS
064285	Flowhood 3
063080	Automask
064181	Provizor
064284	Flowhood 25
012681	Promask M, standard size
012670	Promask S, small size
011680	Sari NR
011685	Sari Sil
030181	Half mask HM-AF NR
030182	Half mask HM-AF Sil
063085	Automask-Litehood
062782	WS-AF welding shield
069917	WS-AF-TC (with helmet)
063280	Albatross 300 welding shield
069920	Albatross 430 (with helmet)

READY PACKS OF PROFLOW SC

Including blower unit, battery, charger (choose Euro or UK plug), face piece, and 2 P3-particle filters.

Code/charger with Euro-plug	Ready Pak content	Code/charger with UK-plug
064301	Proflow SC Automask	064315
064302	Proflow SC AM-Litehood	064316
064303	Proflow SC Provizor	064317
064304	Proflow SC Flowhood 1 MS	064311
064305	Proflow SC Flowhood 1 ML	064312
064306	Proflow SC Flowhood 2	064313
064307	Proflow SC Flowhood 2 A/S	064314
064337	Proflow SC Flowhood 3	064339
064338	Proflow SC Flowhood 5	064340
064308	Proflow SC Promask M	064318
064309	Proflow SC HM-AF NR	064319
064310	Proflow SC HM-AF Sil	064320

For more detailed ordering information: see the Scott H & S Pricelist. Technical Data Sheets are available. Please contact your distributor or Scott Customer Service.

tyco / SCOTT
HEALTH & SAFETY

Finland:

Scott Health & Safety Oy
P.O.Box 501
FIN-65101 Vaasa, Finland

Customer services:
Tel.: +358 (0)6 3244 543, -544
Fax: +358 (0)6 3244 591
e-mail: fin-sales@tycoint
www.scottsafety.com

United Kingdom:

Scott Health & Safety Limited
Pimbo Road, West Pimbo,
Skelmersdale, Lancashire, WN8 9RA

England
Customer services:
Tel: +44 (0)1695 711711
Fax: +44 (0)1695 711772
e-mail: scottint.uk@tycoint.com
www.scottint.com

Distributor:

